



WAS AGM 2023

PRESIDENT'S REPORT

WAS deliverables	events
<p>① 50th Jubilee</p> <ul style="list-style-type: none"> - mid winter? - Crestney opening ^{opening} - Monthly speakers - Newsletter - Dark sky nights ^{Martinborough} - Matahiki - General outreach - e.g. Waterfront - Gifted? - Zealandia 	<ul style="list-style-type: none"> - Christmas party - RASNZ conference - WAS calendar - Website - Social media - Affiliated Societies - Education + Training - Council operations
<p>② GWRC</p> <ul style="list-style-type: none"> - Schools, Northland school - Retirees here Newtown - Space place events 	

- | WAS deliverables | events |
|--|--|
| <p>① 50th Jubilee</p> <ul style="list-style-type: none"> - mid winter? - Crestney opening ^{opening} - Monthly speakers - Newsletter - Dark sky nights ^{Martinborough} - Matahiki - General outreach - e.g. Waterfront - Gifted? - Zealandia | <ul style="list-style-type: none"> - Christmas party - RASNZ conference - WAS calendar - Website - Social media - Affiliated Societies - Education + Training - Council operations |
| <p>② GWRC</p> <ul style="list-style-type: none"> - Schools, Northland school - Retirees here Newtown - Space place events | |

[illegible]

-
- What is the purpose of astronomy? What is it here for?
- To promote Science
 - To bring people together to enjoy the night sky
 - To make astronomy accessible to everyone
 - Promote Astronomy
 - Provide a place to bring people & ideas who have an interest in astronomy
 - Promote the appreciation and need for dark sky
 - Promote the knowledge of astronomy & astronomy in general
 - To inspire & educate people in astronomy
 - To provide a central place for people interested in astronomy & astronomy research
 - Provide an excellent forum for those interested in astronomy & astronomy research
- ASTRONOMICAL SOCIETY

[illegible]

events One

what needs to be done?

Skyways?

select group → invite core group's family
was enough people in community / from friends to provide
like it was like a all ways and we have been trust
acknowledgment of Sig core group / context of this observatory
going forward and its to...

New members

decided over for 2008
council members to be identifiable
to new members at meetings

welcoming committee

buddy system

Council Operations

rated was member
e to talk to → Monthly meeting format d
→ Rewrite constitution
- Arch

events One

what needs to be done

Sketches?

change in structure
change in content
2000
document

select group → invite core group's family
was enough people in observations / allow people to spend
like it possible to allow and let them have trust
acknowledgment of Sig core group / context of this observation
going forward and let it...

New members

decided then for 2000
council members to be identifiable
to new members at meetings

welcoming committee

buddy system

Council Operations

rated was members
to talk to → Monthly meeting format
→ Rewrite constitution
- Arch

- More opportunities to engage with schools
- (During the day)
- Early education - we don't have the resources
 - Find out who our members are
 - Māori ~~Astronomy~~ Astronomy? Motonaki biggest grant
 - Tiki tok? Māori constellations
 - Introductory courses - '101'
 - Outreach chips - financial
 - Observatories - historical value we don't lose this
 - We don't want to lose our observatories
- media strategy!

- More opportunities to engage with schools
- (During the day)
- Early education - we don't have the resources
 - Find out who our members are
 - Māori ~~Astronomy~~ Astronomy? Motonaki biggest grant
 - Tike tok? Māori constellations
 - Introductory courses - '101'
 - Outreach trips - financial
 - Observatories - historical value we don't lose this
 - We don't want to lose our observatories
- media strategy!

- Outreach, how we capture the most
- Introduce people to astronomy
- Social media is driving people - our facebook page
- Events attract up to a few thousand
- run of presenters / calibre of people + science communication

- Outreach, how we capture the most
- Introduce people to astronomy
- Social media is driving people - our facebook page
- Events attract up to a few thousand
- run of presenters / calibre of people + science communication

* [50] - M

* * -

* - Advertising - Schools? Space place?

- RASNE & History Section

↓ presentation

- Discussion with funding members

* * - Introduction to WAS / New members Indu

Buddy system - Introduce

Health and safety arm? Hazard map?

* [50] - M

* * -

* - Advertising - Schools? Space place?

- RASNE & History Section

↓ presentation

- Discussion with funding members

* * - Introduction to WAS / New members Indu

Buddy system - Introduce

Health and safety arm? Hazard map?

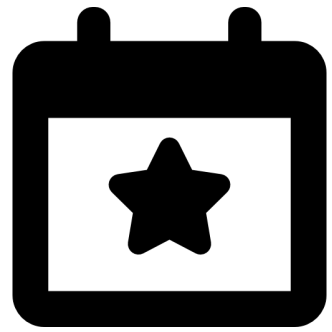
Monthly meeting schedule change to Tuesday





KEY ACTIVITIES for 2023

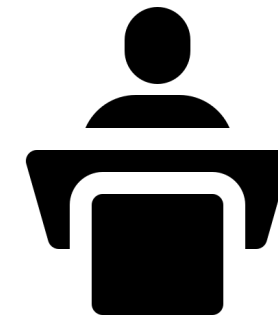
2023 HIGHLIGHTS



57 Events
scheduled with
37 successful



12 Dark Sky
Observing Nights in
Martinborough



10 Public
Astronomy talks
held +9
Speaking
Engagements



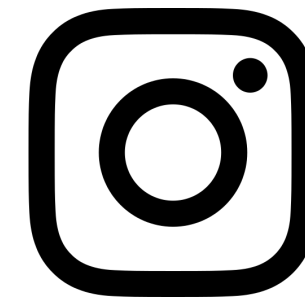
50th Jubilee
Celebrated



10 Monthly
Newsletters distributed



140
WAS Members



302 Instagram
followers



13,423
combined Facebook
followers



News > News

Wairarapa Dark Sky Reserve Becomes New Zealand’s Second International Dark Sky Reserve

By Amber Harrison · Published January 19, 2023 ⓘ

Wairarapa becomes official Dark Sky Reserve for stargazing in New Zealand



By [Sara Bunny](#)
21 Mar, 2023 10:00 AM ⌚ 6 mins to read

🔖 Save | ➦ Share



NEW ZEALAND / ENVIRONMENT

Wairarapa districts become dark sky reserves

6:03 pm on 19 January 2023

Share this     

Plan to make Wairarapa the largest dark sky reserve in the world

Piers Fuller · 17:21, Sep 04 2020

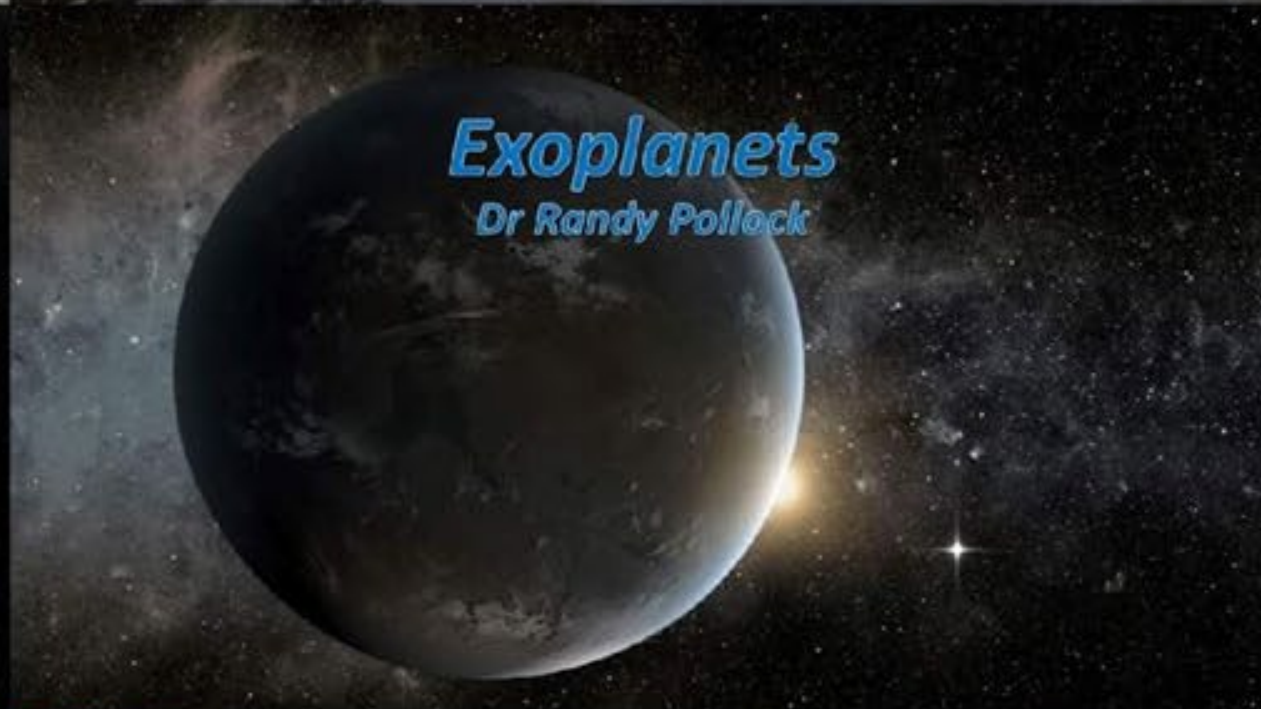
  



The Beatrice Hill Tinsley Lecture 2023
Cosmic cataclysms:
A dynamic and changing Universe
Dr Ryan Ridden



Free Public Talk
7:30 pm Wednesday 19th July
@St Andrews on the Terrace

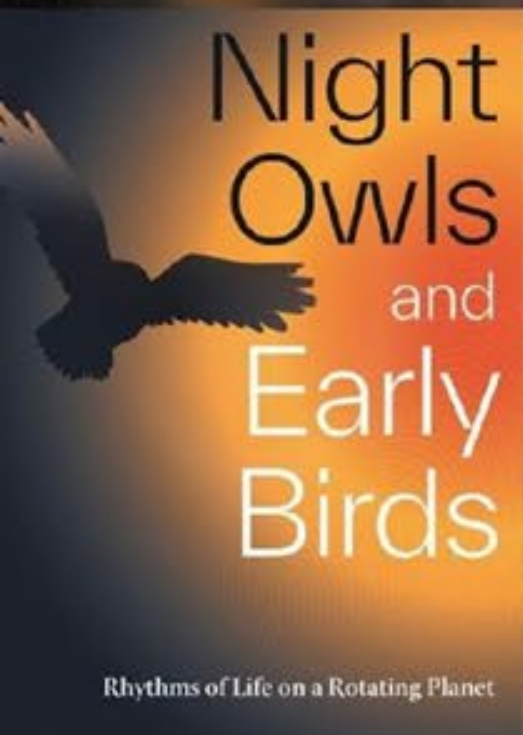


Exoplanets
Dr Randy Pollock



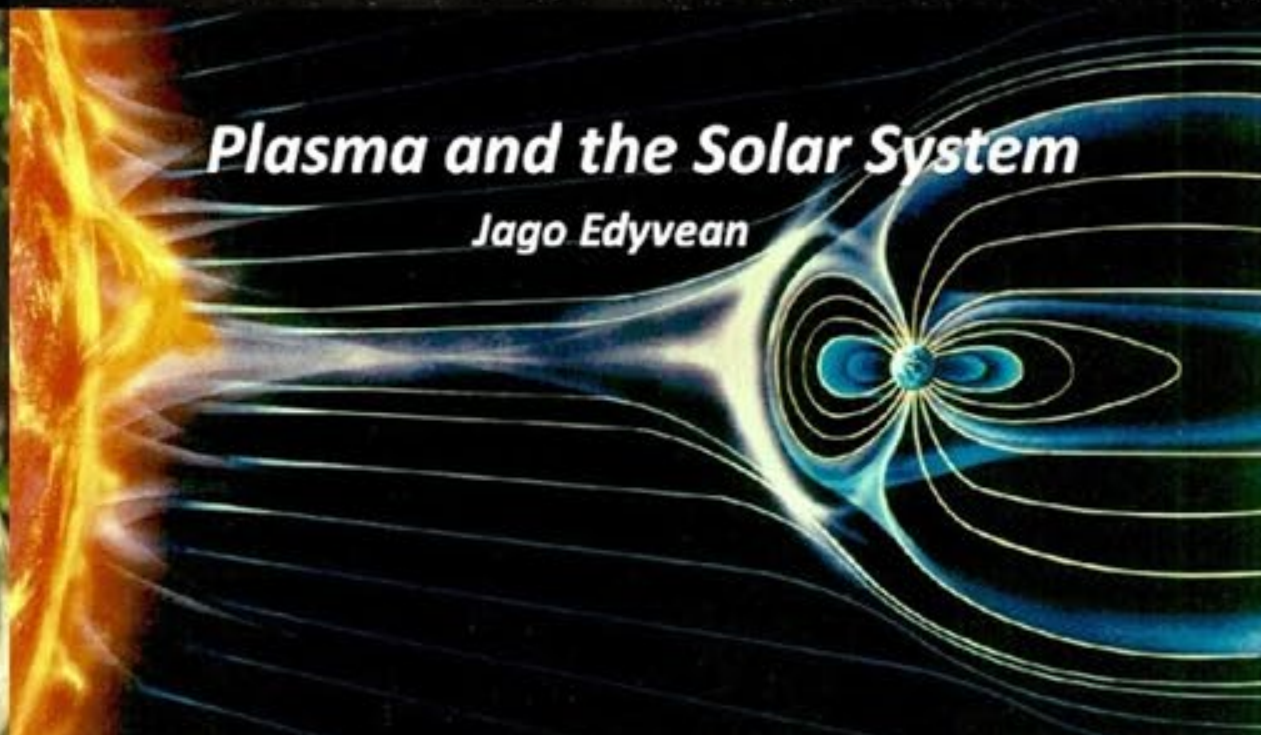
**What it's like to intern at
NASA's JPL**

Daniel Wrench

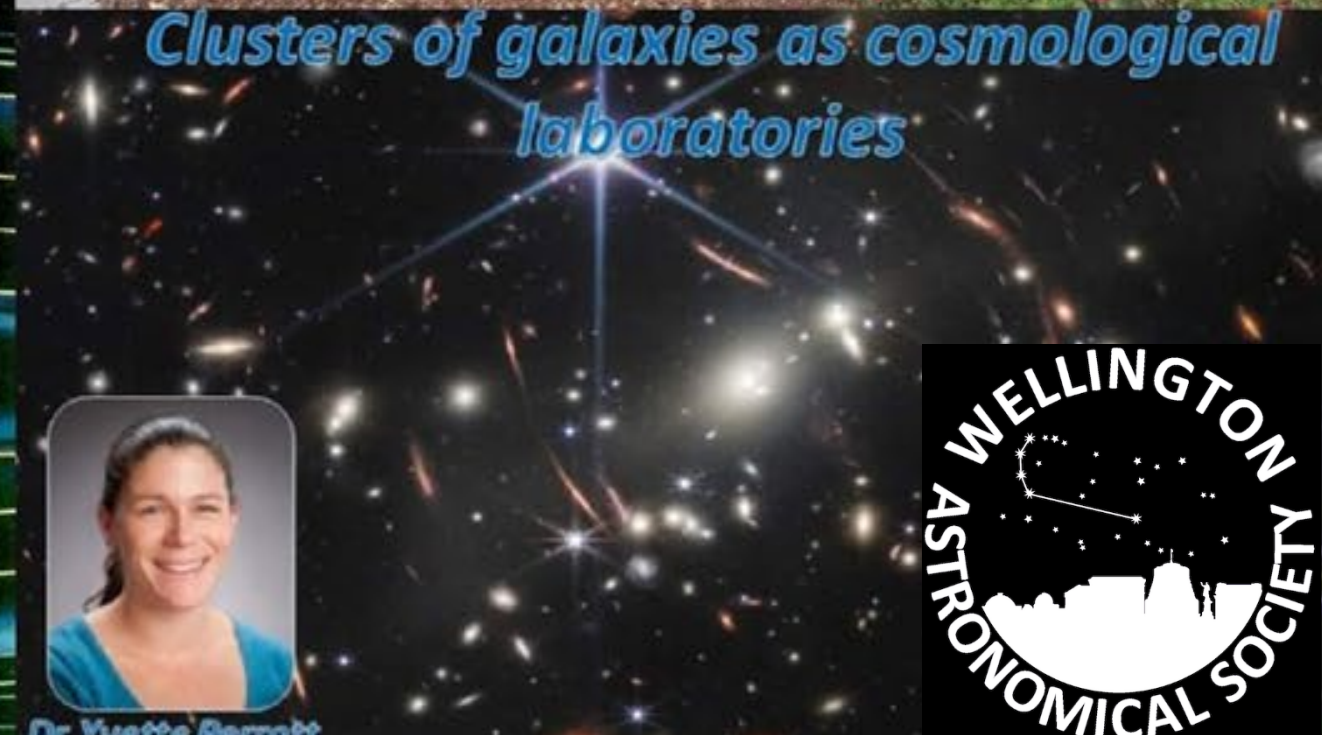


Professor Emerita
Philippa Gander

Rhythms of Life on a Rotating Planet



Plasma and the Solar System
Jago Edyvean



**Clusters of galaxies as cosmological
laboratories**



Dr Yvette Bernick





WAS RASNZ ATTENDANCE



Matariki at Government House



Village in the Park



Congratulations! Wellington Airport Regional Community Awards

2023 Finalist – Wellington City





WE TURNED 50!!!

CRETNEY OBSERVATORY UPDATE



REMINDER OF THE JOURNEY SO FAR!!!

- Bequest from Syd Cretney (early 2014)
- Transfer of funds to WAS (mid 2015)
- Visioning and engagement with members (late 2020)
- Planning (early 2021)
- Design (mid 2021)
- Procurement (mid 2021)
- Construction (late 2021 – early 2022)
- Preliminary installation (2022)
- OTA delivery and installation (early 2023)
- Testing (throughout late 2022 and 2023)



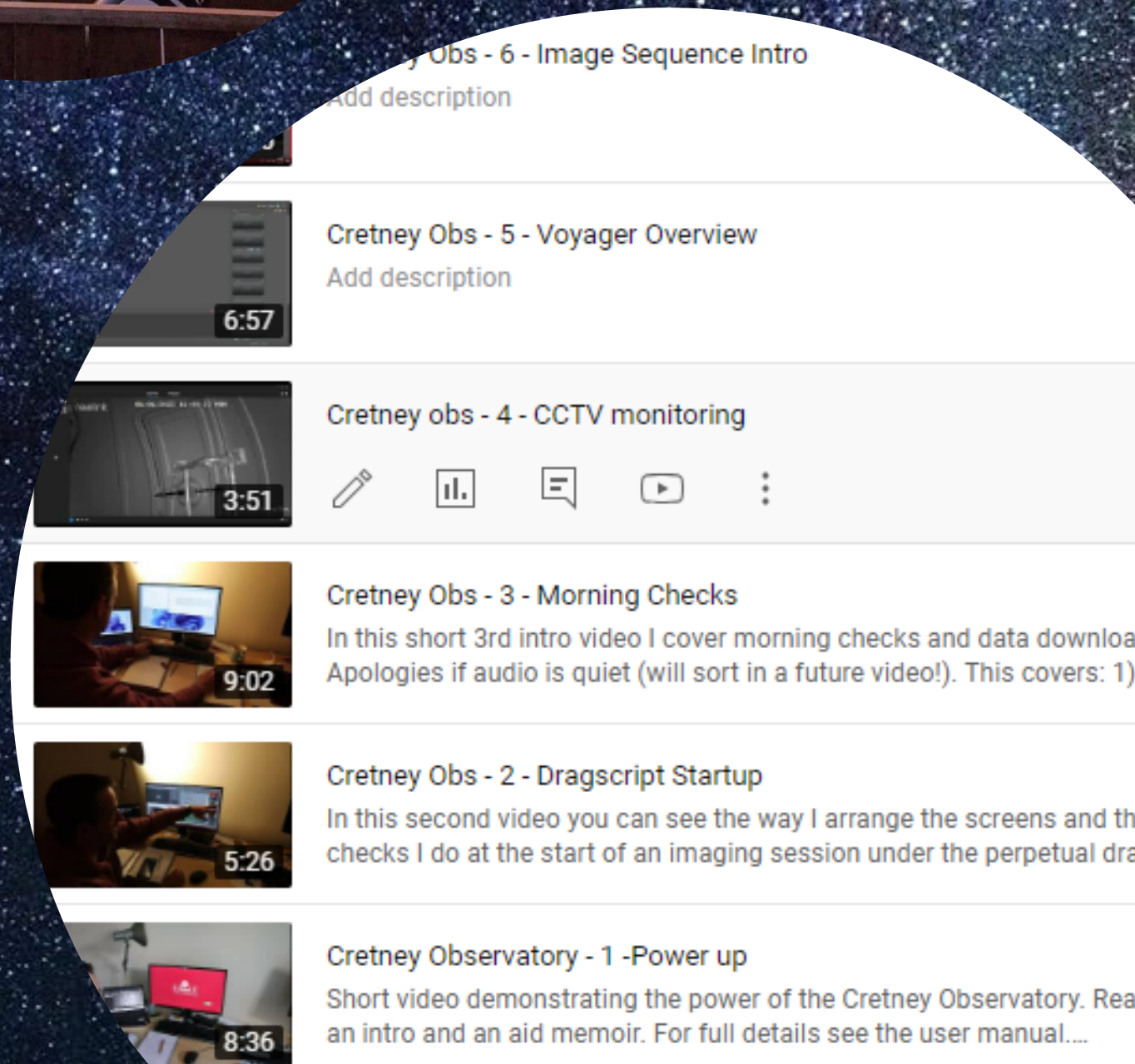
CURRENT STATUS

- The Optical Tube Assembly (OTA) of our telescope has been sent to Italy for repairs to fix halo issues.
- We are temporarily using the Celestron C14 Edge HD telescope from the Gifford Observatory.
- The Celestron C14 Edge HD telescope's longer focal length will enhance our viewing capabilities including over the 'galaxy season'.



Opportunities for the future - Training

- Core user/operator group
- Wider interested members
- Member casual users
- Public & outreach
- Broader education and training



CRETNEY OFFICAL OPENING TBC

Once our telescope issues are resolved
we will officially open the Cretney
Observatory !!!



Test images

- 40 test images taken in 18 months between Apr '22 and Oct '23
- Total integration of 410hrs with an average integration ~10hrs
- Taken with 3 instruments on a range of subjects
- Testing covered automation, software, hardware, optical issues, data transfer, etc.



HONORARY MEMBERSHIPS



MATT BALKHAM

- Matt has shown an unwavering commitment to the society, dedicating countless hours to the management and operation of the Cretney Observatory.
- Matt's dedication to the society and the field of astronomy is evident in his tireless efforts to ensure the observatory is not only operational but has immense possibilities going forward.

PETER WOODS

- Peter has stepped down from Council after longstanding service.
- As the webmaster he made sure our site was maintained as a rich source of information for both members and the public.
- His role and continued support for WAS outreach has help contribute to our community of astronomy enthusiasts and in promoting the society's mission. Peter you will be missed!

LIFE MEMBERSHIP

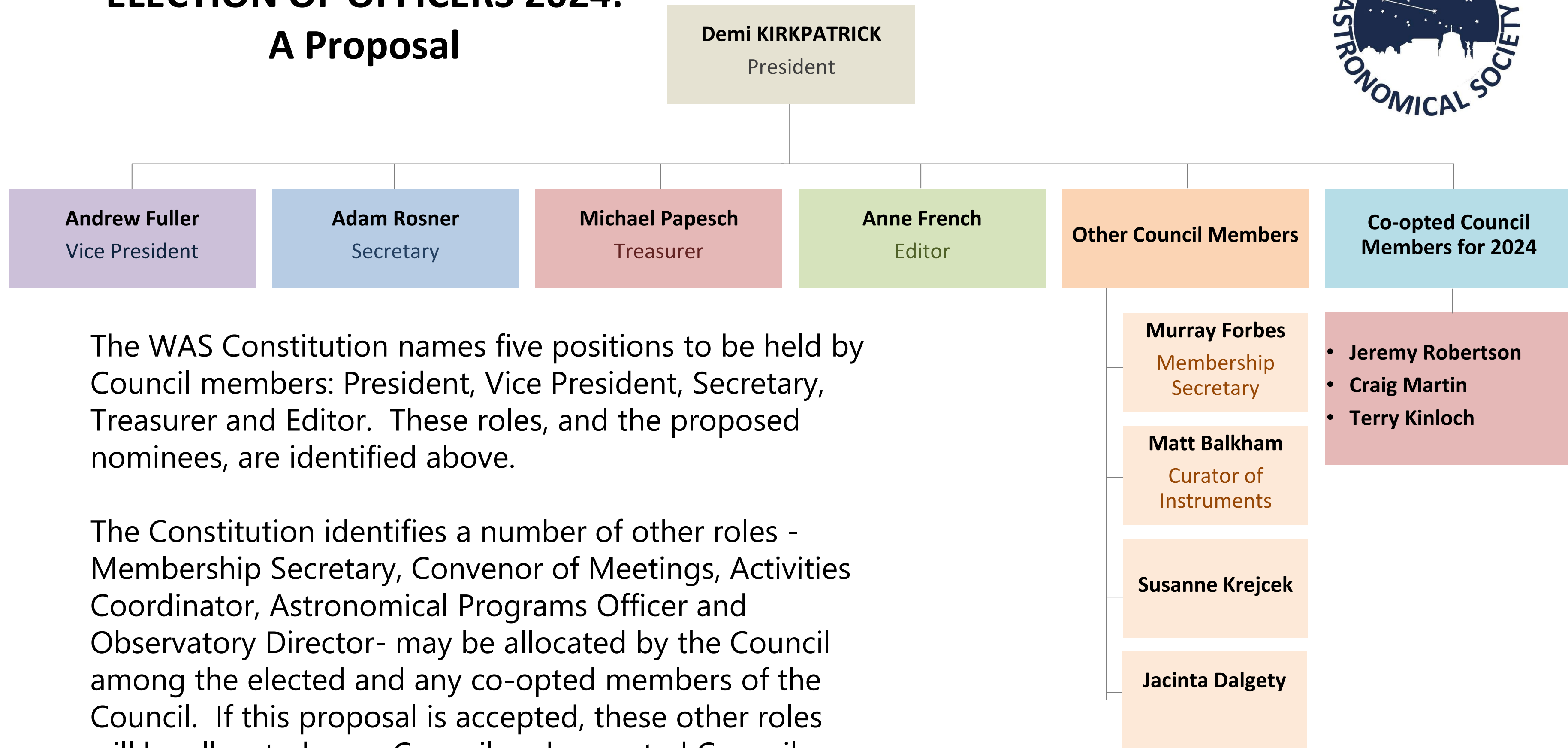
MARYLIN HEAD

- Marilyn Head has been actively involved in research and education in the field of astronomy. Her contributions to the Wellington Astronomical Society are very noteworthy!.
- Marilyn stepped up to run WAS in the late 1990s during a difficult time. Her contributions including editing and publishing Galaxy Magazine, running the local children's astronomy club, active on the Gifford Observatory Trust and being an active science writer for major NZ publications including interviewing high profile science figures



2024

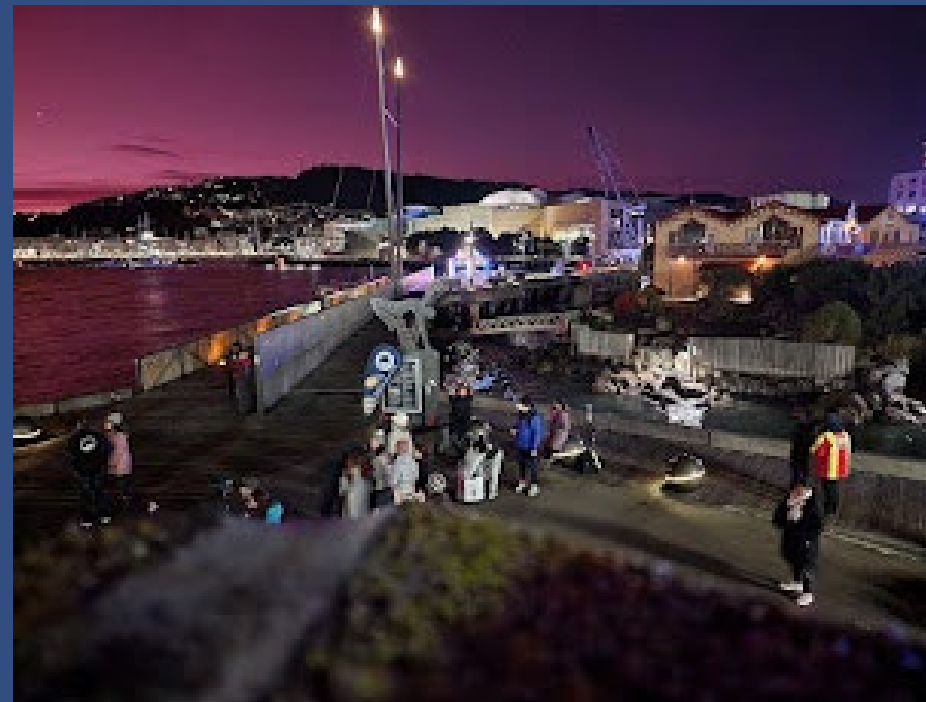
ELECTION OF OFFICERS 2024: A Proposal



WE NEED YOUR SUPPORT IN 2024!



Opened December 1 1924
the Gifford turns 100 next
year and we want to
celebrate!



\$\$\$ Fundraising! We want to
make sure WAS is financially
sustainable and we need
some help!



6 week introductory course
to Astronomy. Who wants to
help?

Monthly meeting venue & day arrangements???



THANK YOU TO MANY OF OUR WAS SUPPORTERS



Space Place
At Carter Observatory



 experience
Wellington
wellington museums trust

**Wellington
Museum**



**Absolutely Positively
Wellington City Council**
Me Heke Ki Pōneke

ZEALANDIA™
TE MĀRA A TĀNE



Wairarapa Dark Sky Reserve

 ARVIDA
Village at the Park



Thank you very
much!